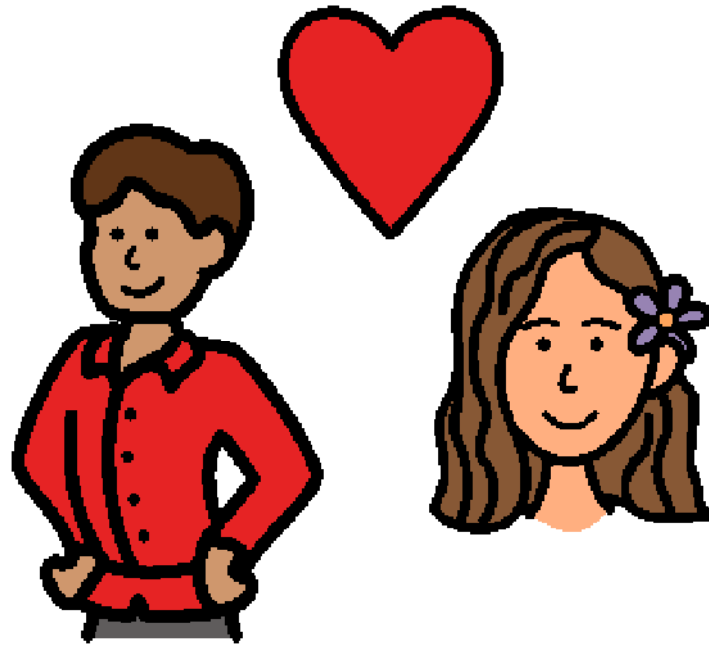


Romeo and Juliet

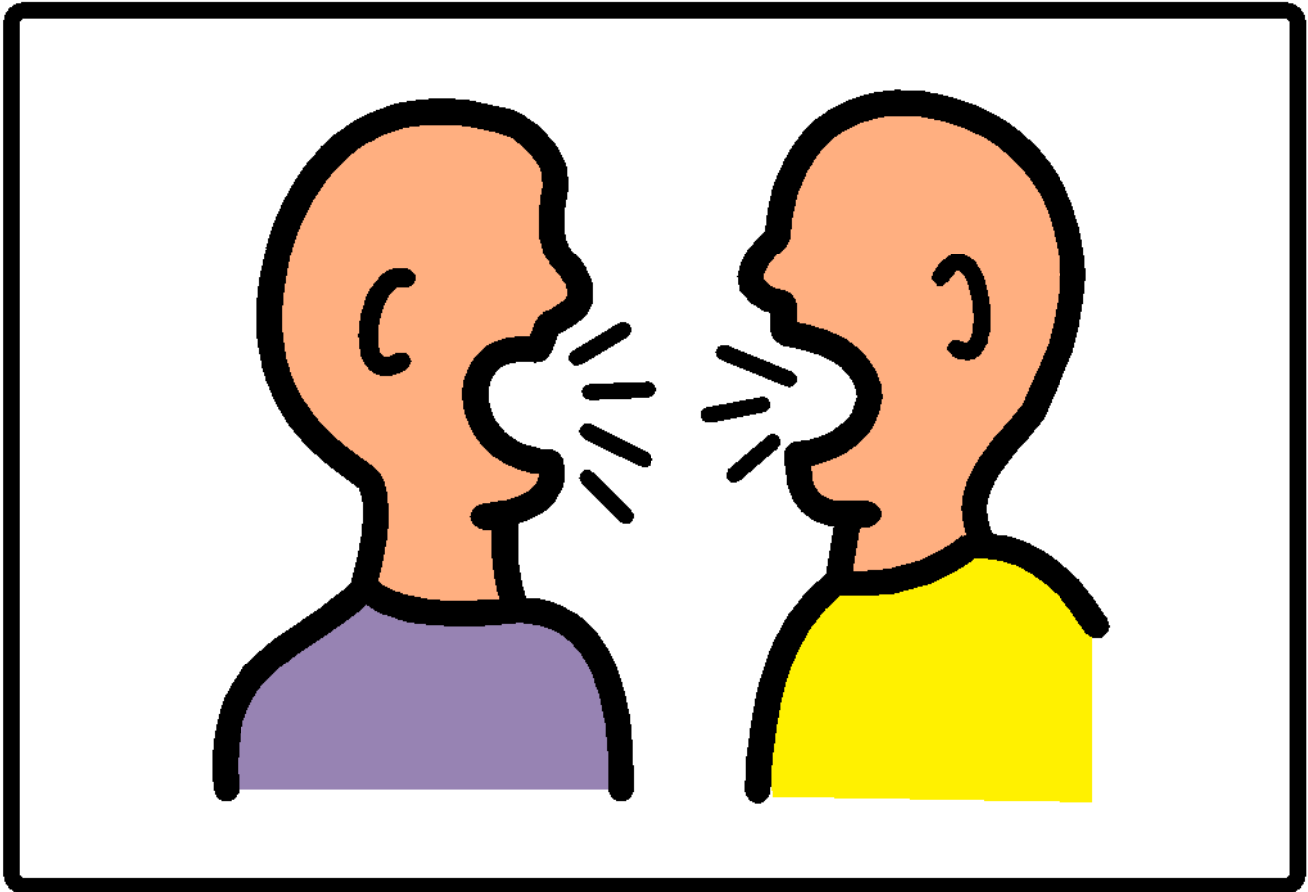


By: William Shakespeare



Adapted by: Emily Boyett



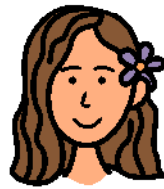


Romeo's



family

&



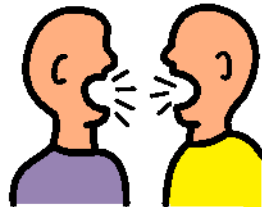
Juliet's



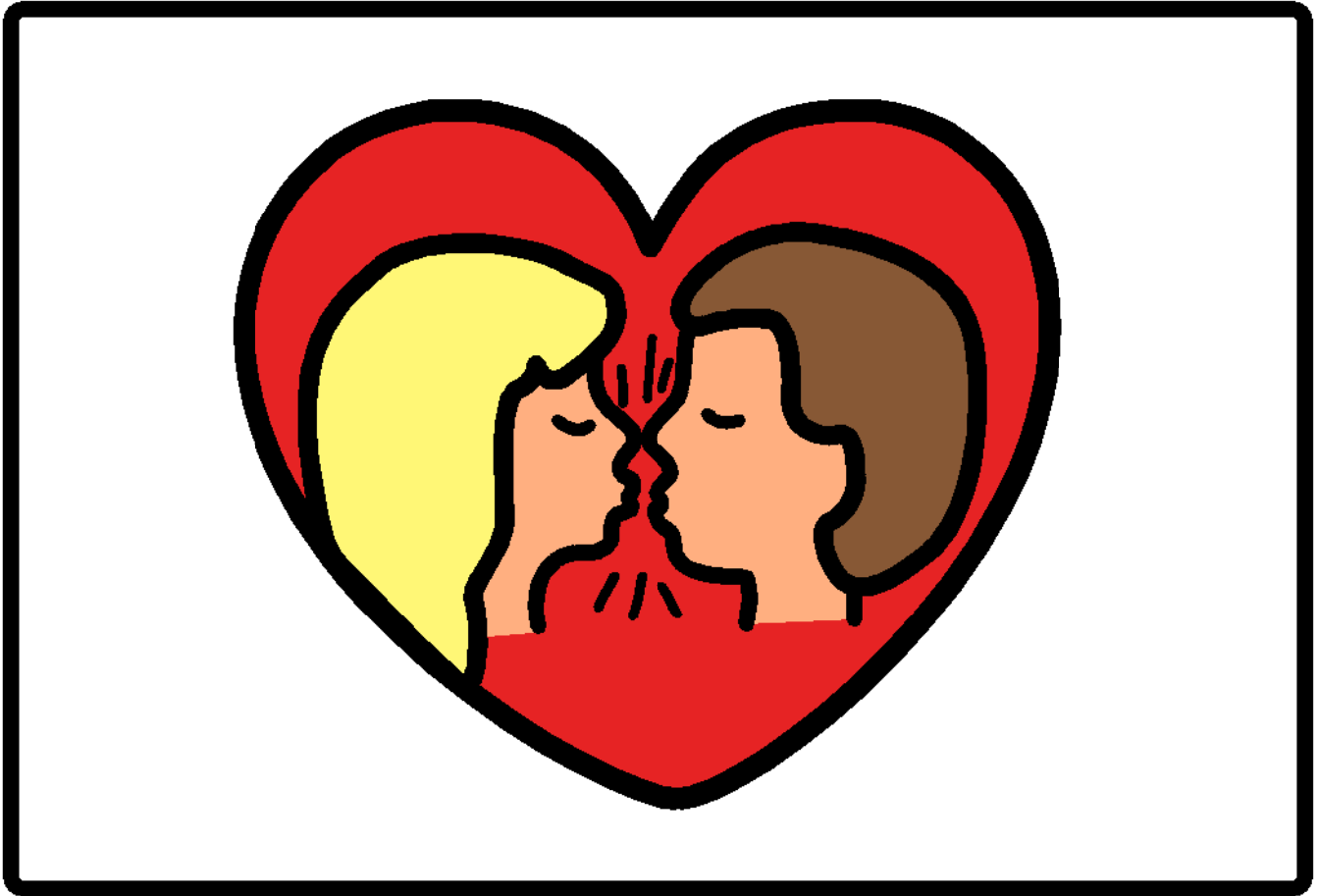
family



were

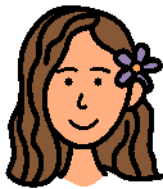


fighting.

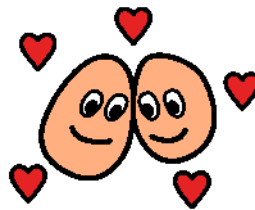


Romeo

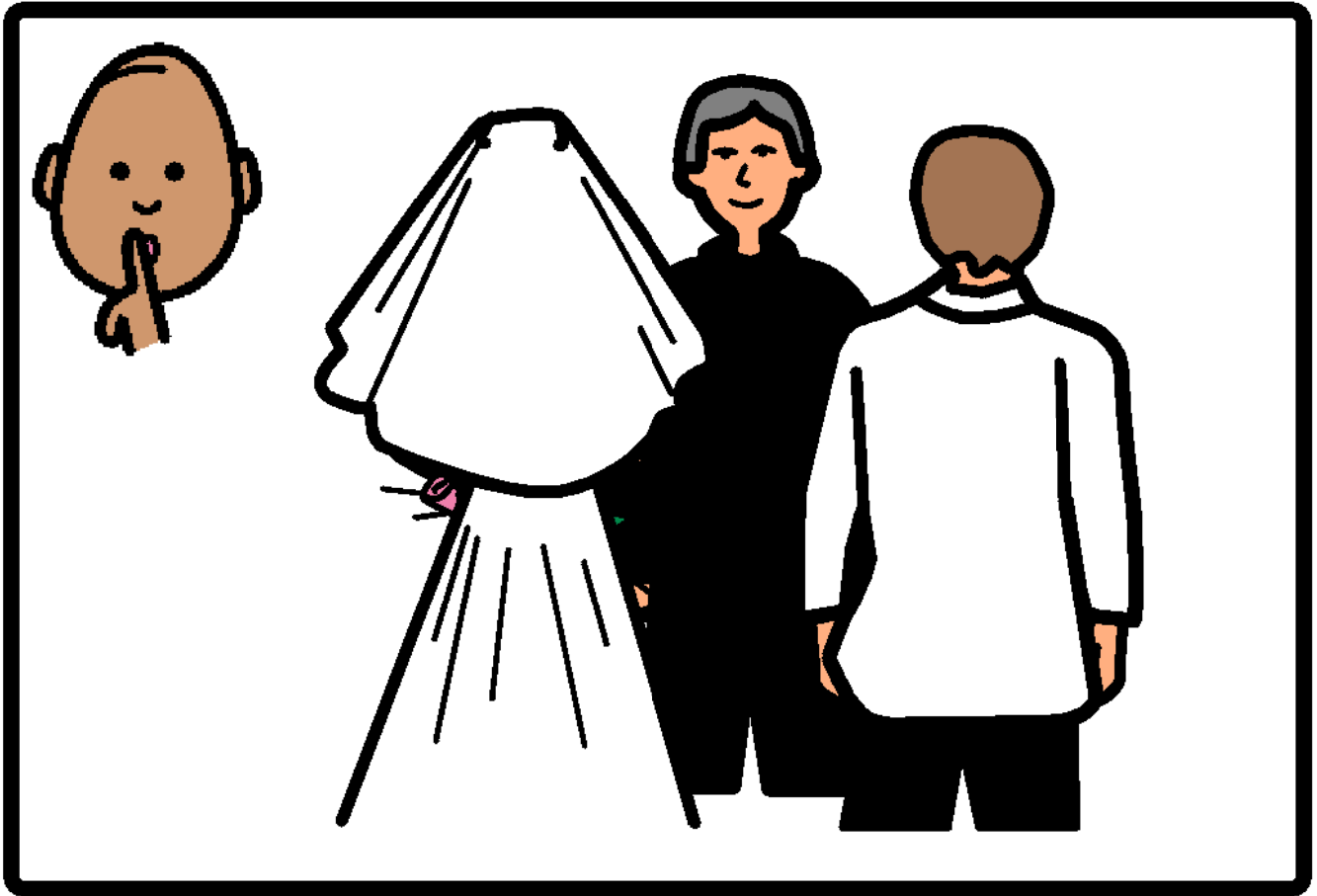
&

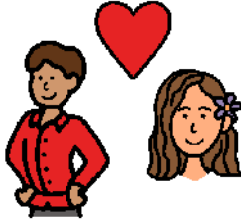
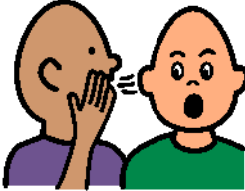



Juliet

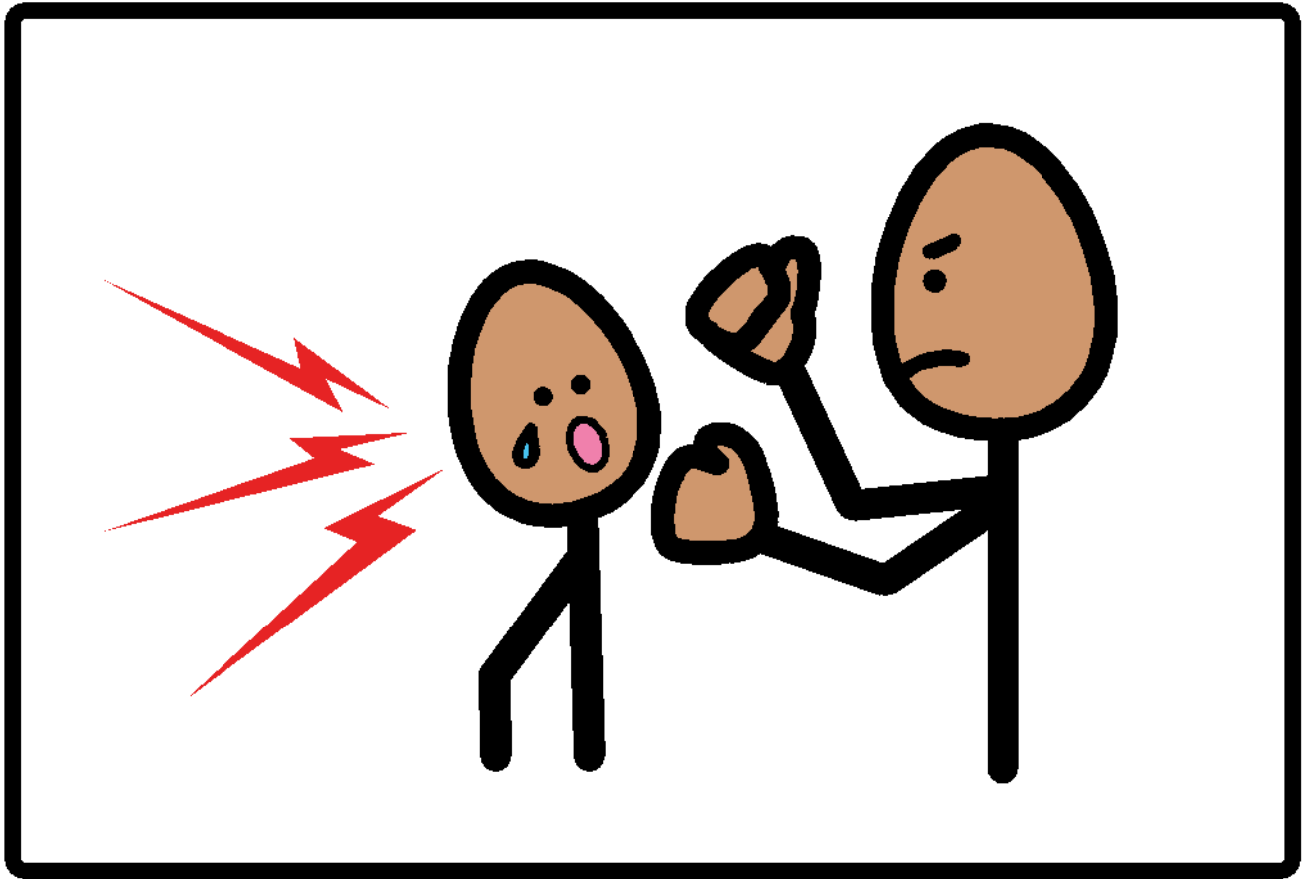


fall in love anyway.

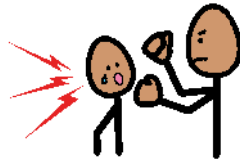


They secretly get married.



Romeo



hurts



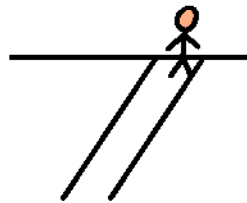
a guy



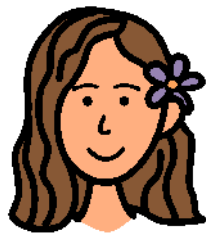
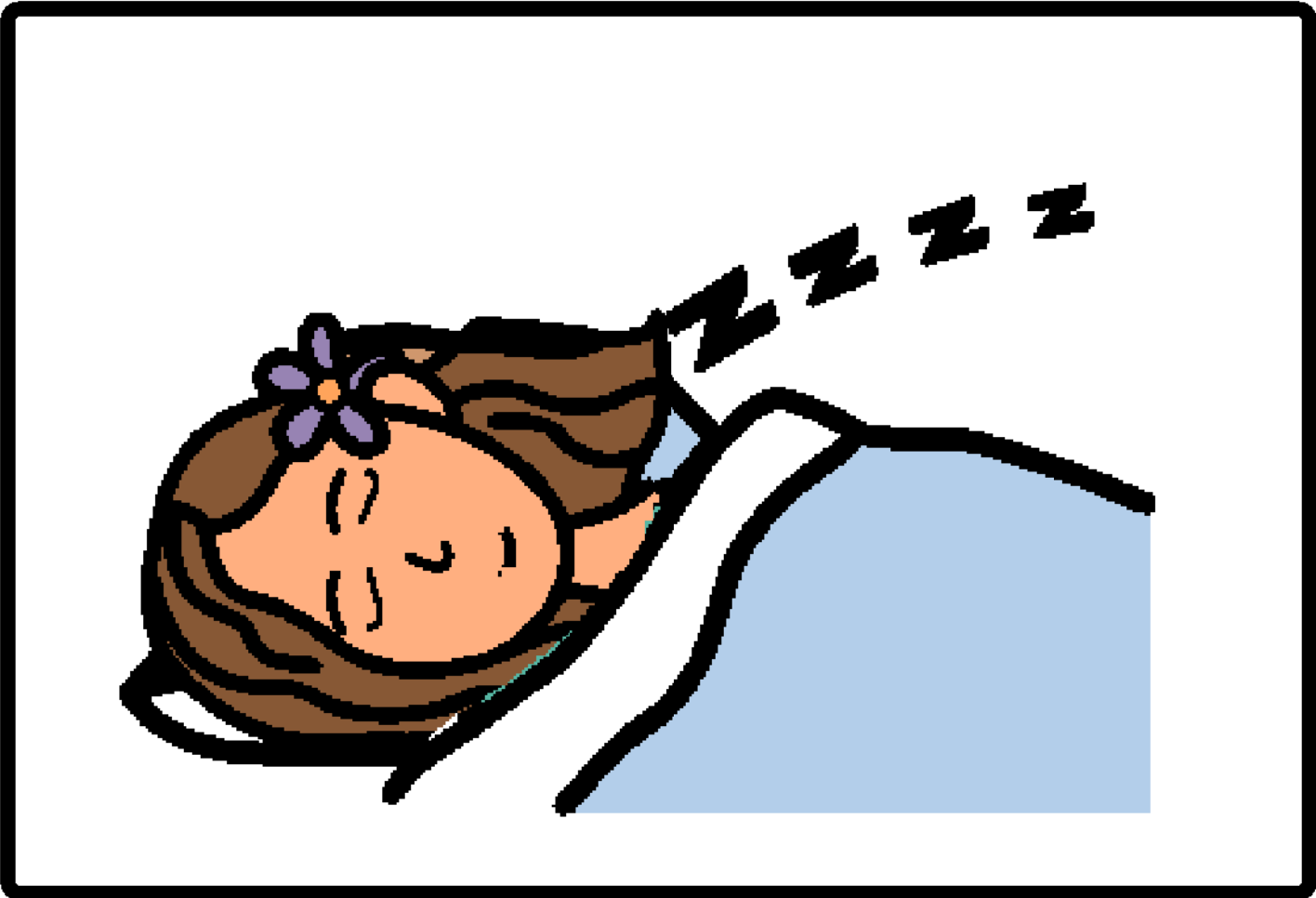
and



is



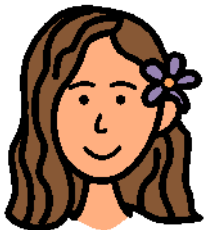
sent away.



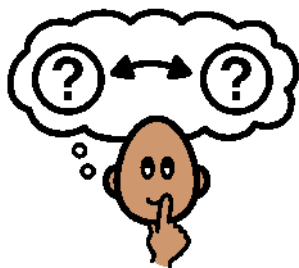
Juliet



hears.



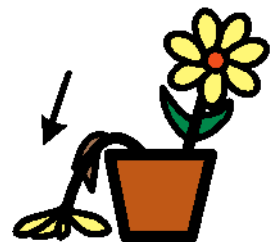
Juliet



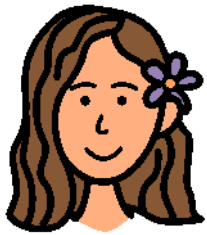
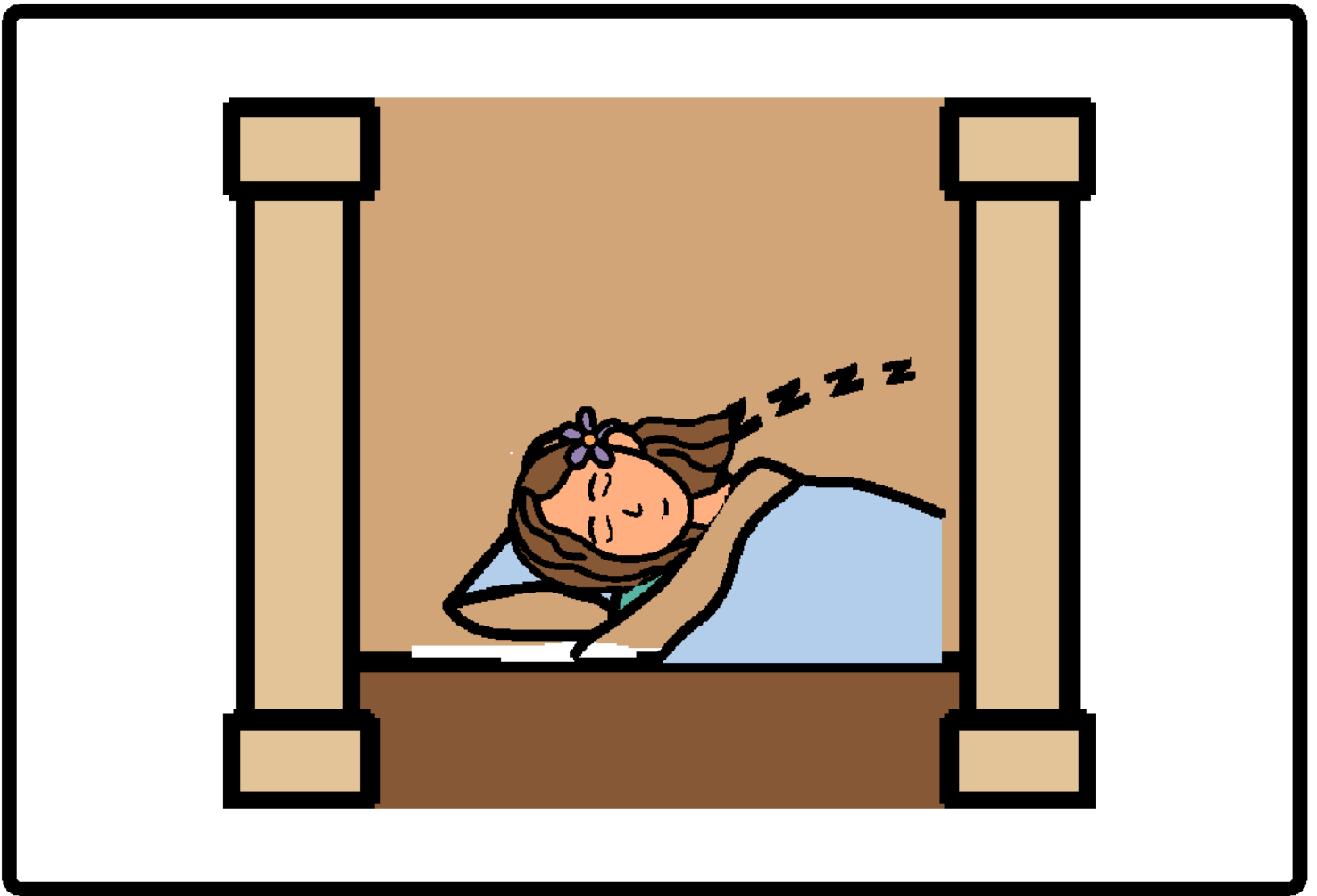
decides



to play



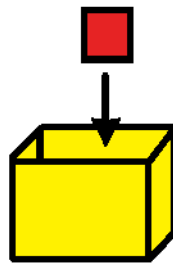
dead.



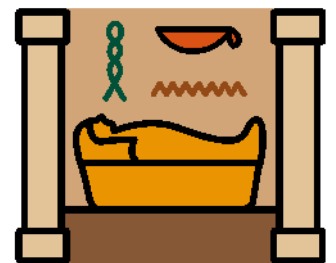
Juliet



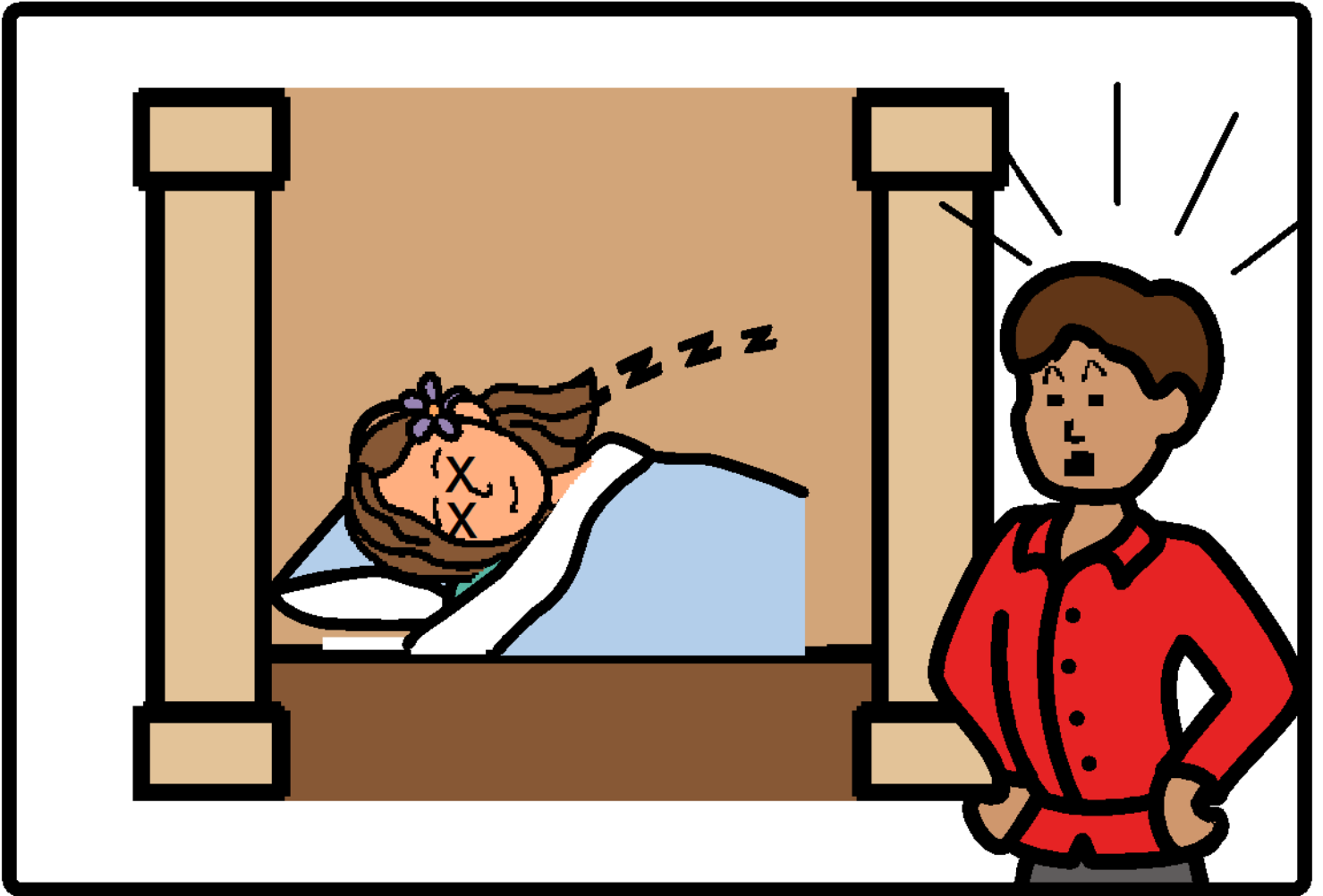
is



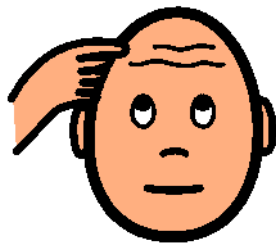
put in



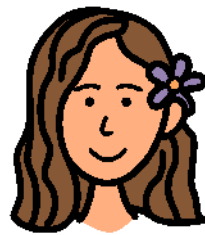
a tomb.



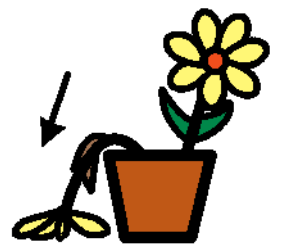
Romeo



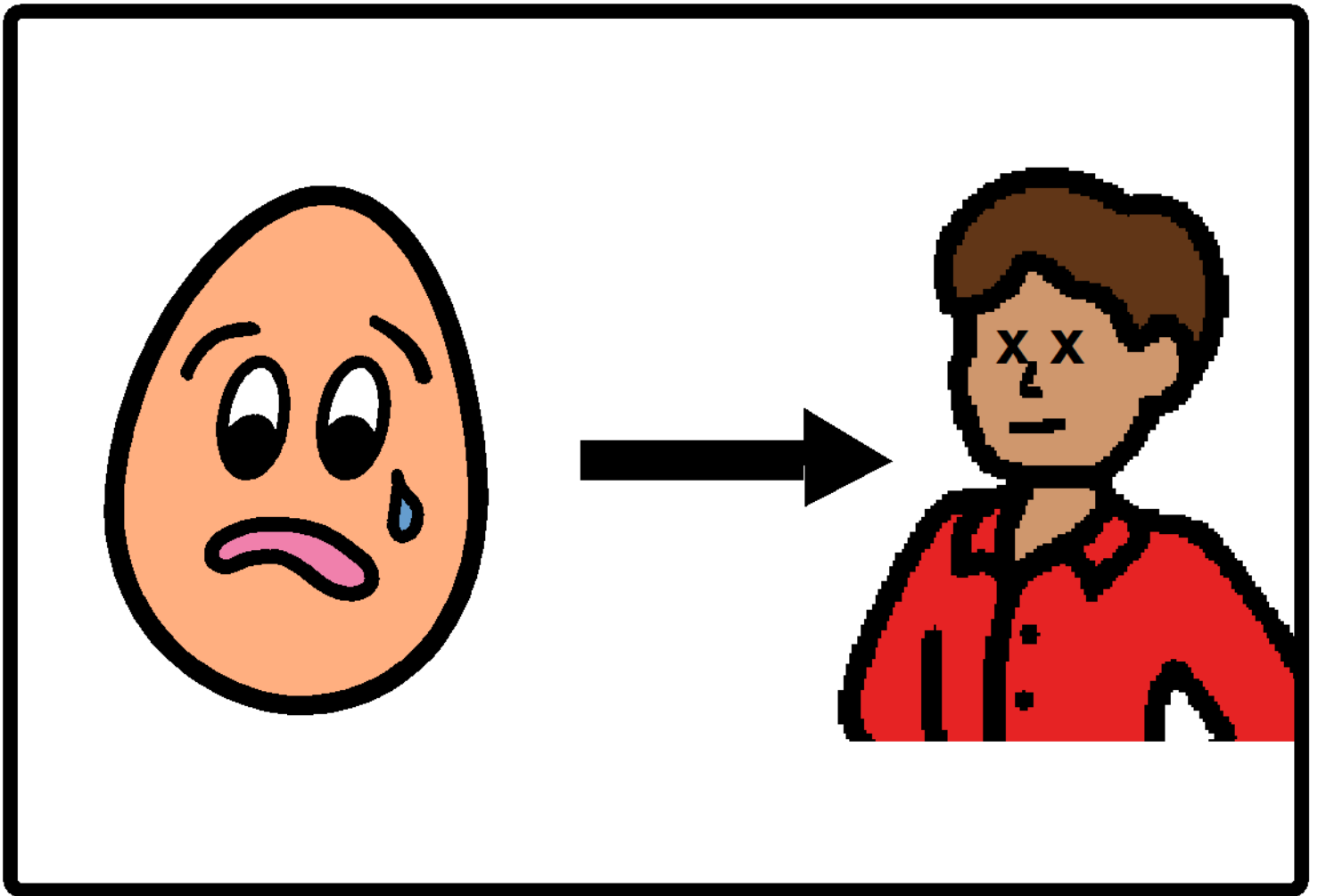
thinks



she's



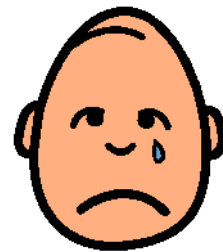
really dead.



Romeo



was



sad.



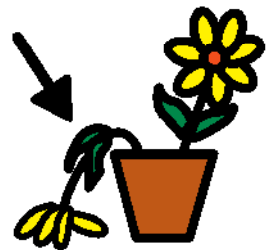
He



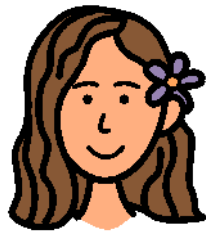
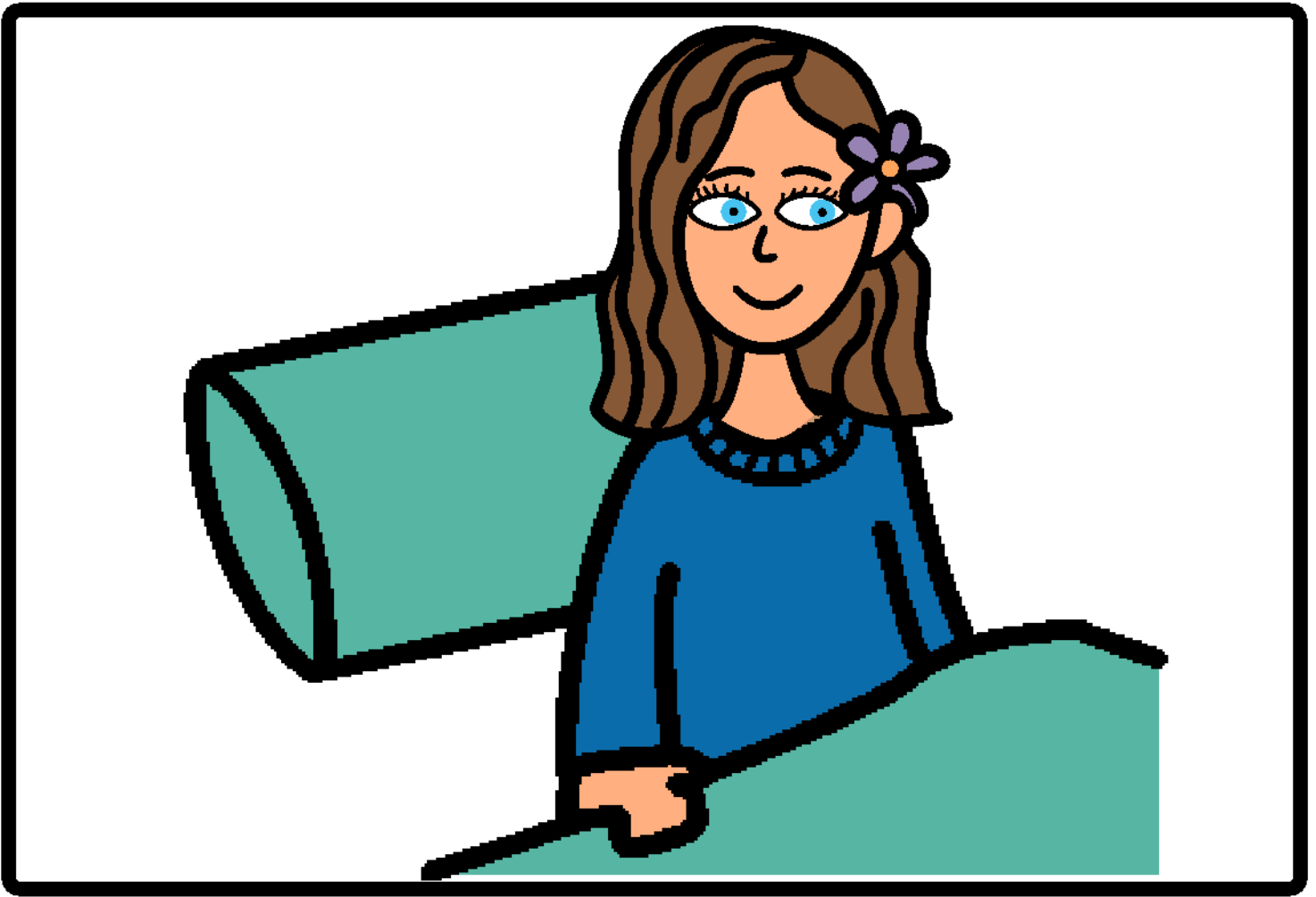
drinks



poison



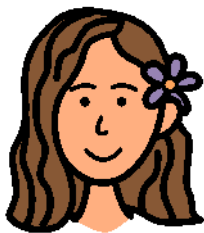
and dies.



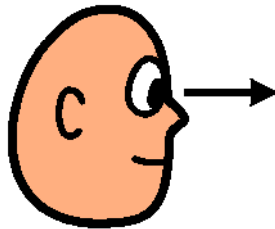
Juliet



wakes up.



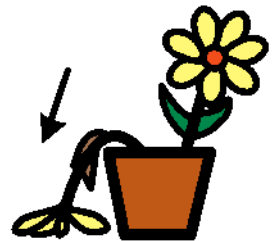
She



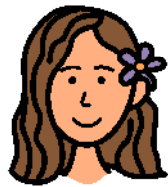
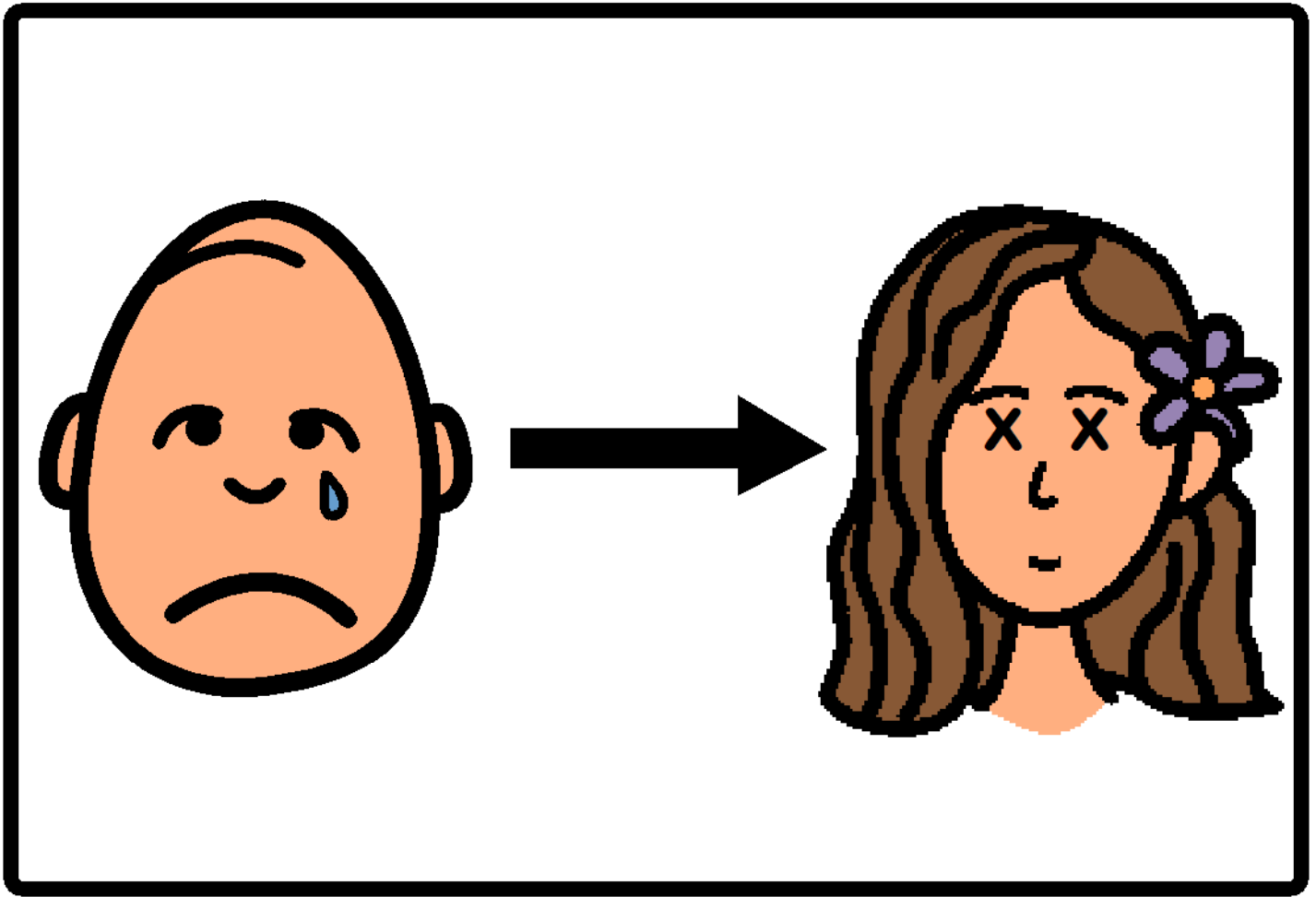
sees



Romeo



dead.



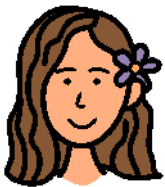
Juliet



was



sad.



She

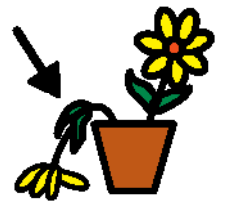


stabs

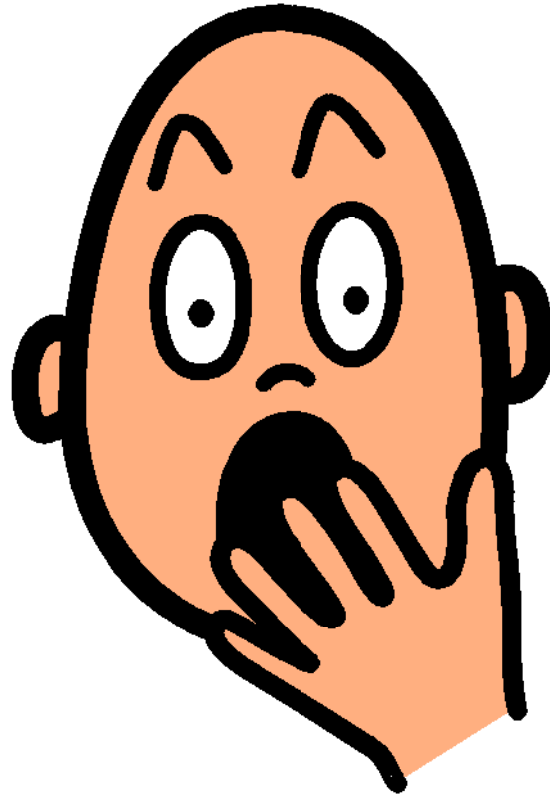
herself



and



dies.



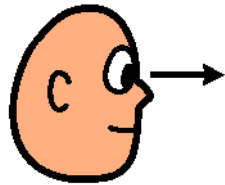
2



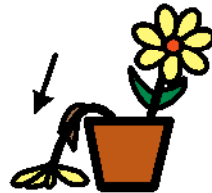
The two families arrive.



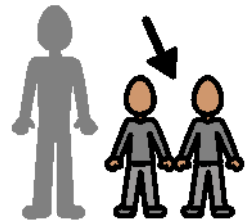
They



see



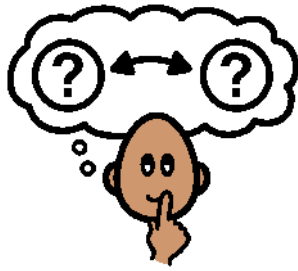
their dead



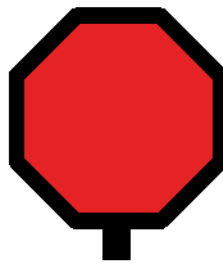
children.



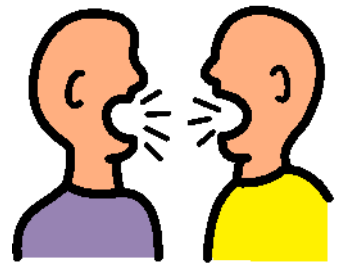
The families



decide

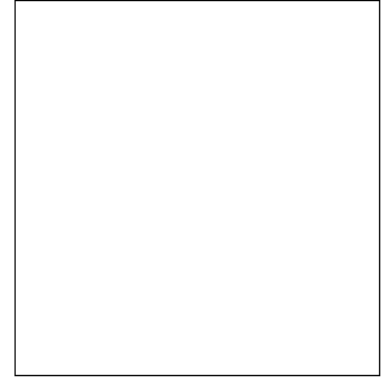
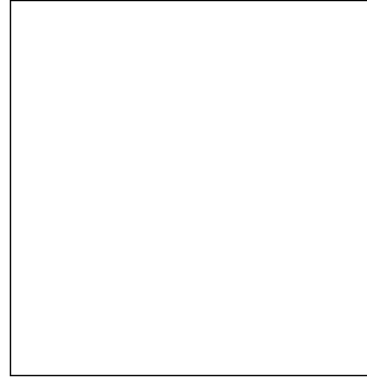
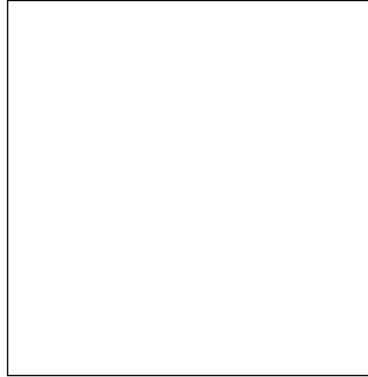
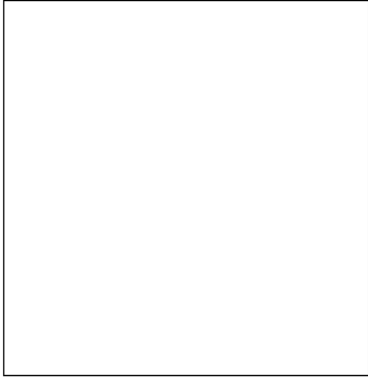
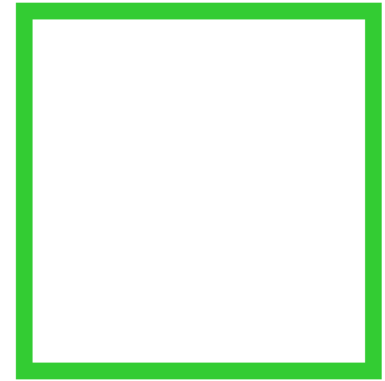
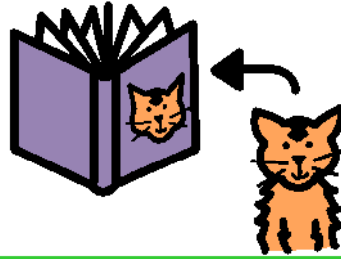


to stop

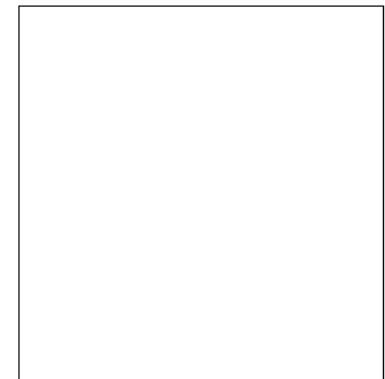
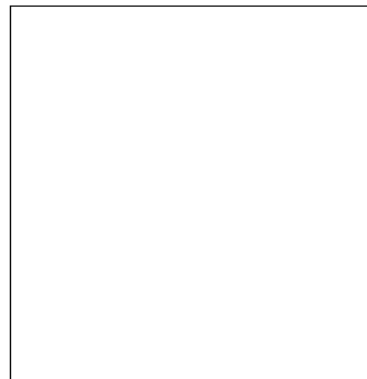
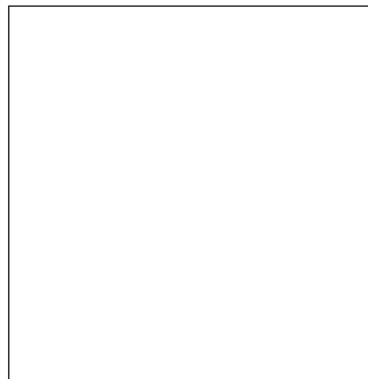
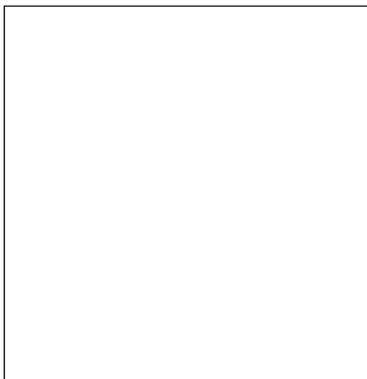
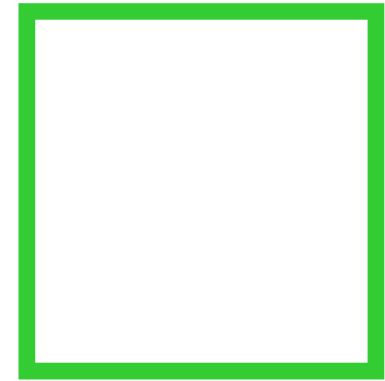
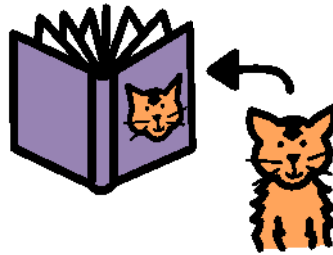


fighting.

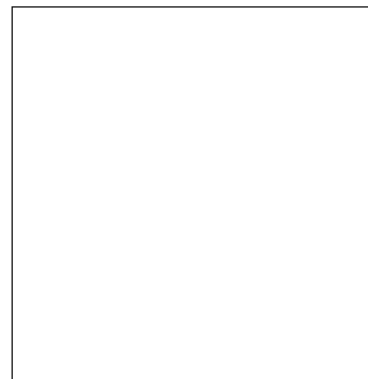
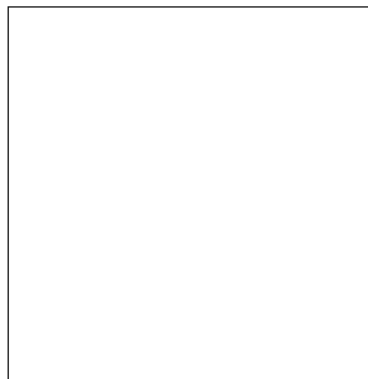
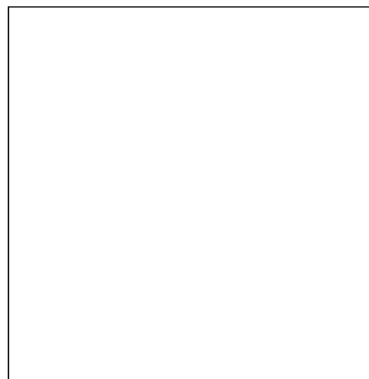
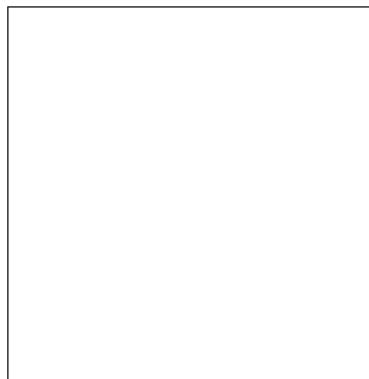
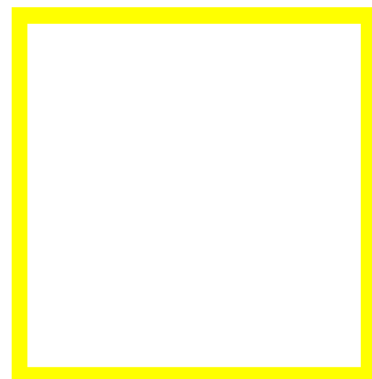
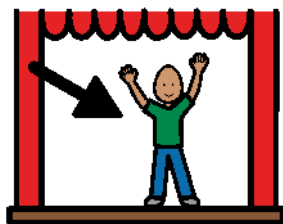
What is the main idea of the story?



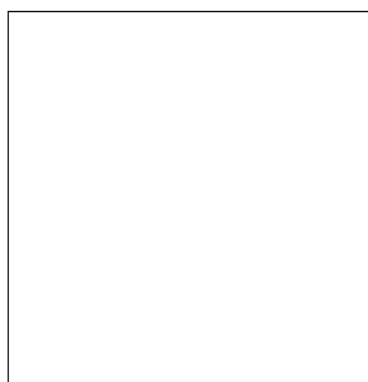
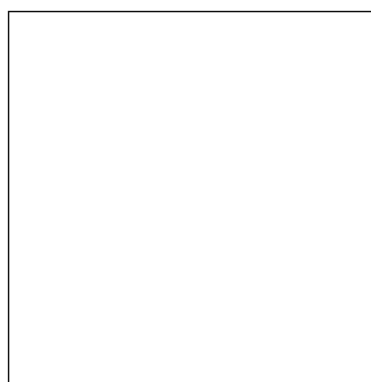
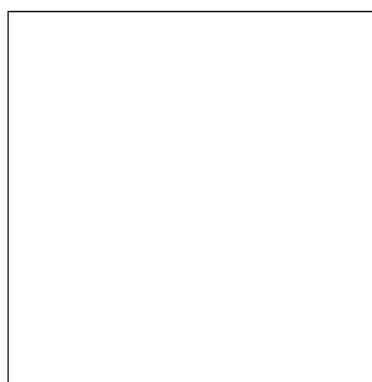
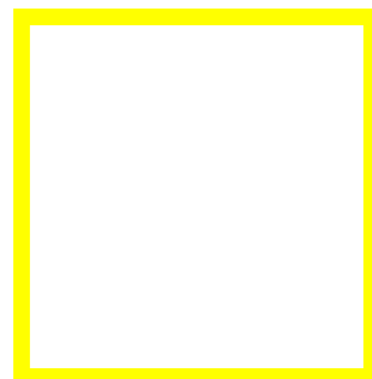
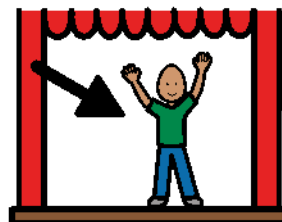
Justify why that is the main idea.



Who are the main characters?



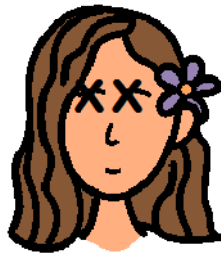
How do you know who the main characters are?



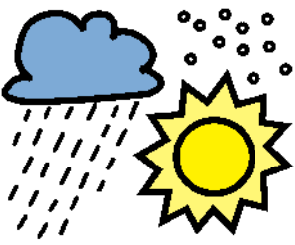

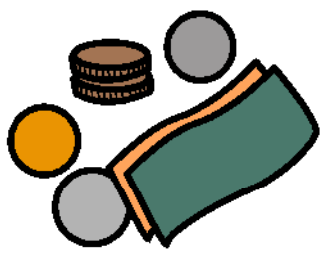
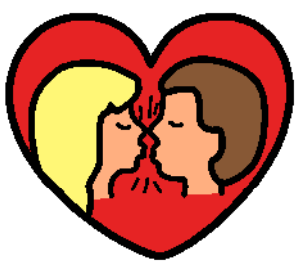


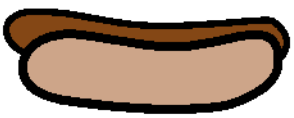

What is the main event in the story?



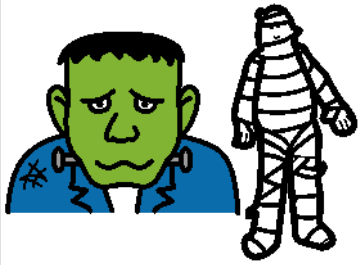

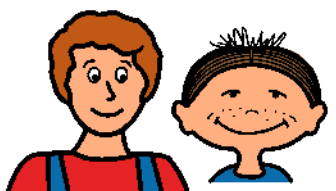
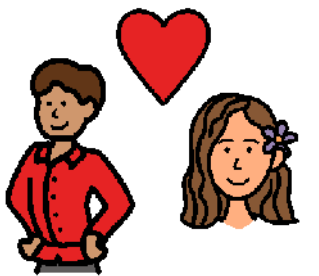



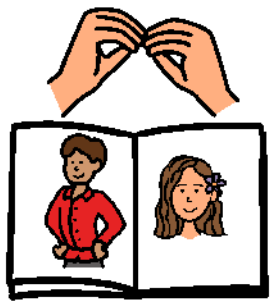
What is the cause of Juliet's death?



main idea/justify (pg 14)

| | | | |
|---|---|--|--|
| <p>1</p> <p>weather</p>  | <p>Christmas</p>  | <p>money</p>  | <p>forbidden love</p>  |
| <p>2</p> <p>beach party</p>  | <p>get a puppy.</p>  | <p>hot dog eating contest</p>  | <p>they secretly get married</p>  |

main character/how do you know (pg 15)

| | | | |
|--|--|--|--|
| <p>1</p> <p>Frankenstein & Mummy</p>  | <p>Rosco & Ziggy</p>  | <p>Tom and Huck</p>  | <p>Romeo and Juliet</p>  |
| <p>2</p> <p>they eat pizza</p>  | <p>they are pretty</p>  | <p>they are silly</p>  | <p>in the story more</p>  |

main event/cause & effect (pg 16)

| | | | |
|--|--|--|--|
| <p>1</p> <p>They go swimming.</p>  | <p>They go shopping.</p>  | <p>They go to a movie.</p>  | <p>Romeo and Juliet die.</p>  |
| <p>2</p> <p>She laughs too hard.</p>  | <p>She falls.</p>  | <p>She gets hit by a car.</p>  | <p>Juliet stabs herself.</p>  |

English II.3

Answering comprehension questions performance level 3

This activity is designed to allow students to demonstrate identifying the main idea, the main characters and a main event in a story and justify their answers.

Instructions:

Make sure Boardmaker is in Design mode (if needed, press CTRL + D or ESC to change to Design Mode).

Print pages 1-18

Place pages 1-16 in page protectors or laminate and 3 hole punch pages.

Cut out answers (on pages 17 and 18) and laminate. Use these answers as manipulatives for

student to place in answer fields.

Place soft velcro on blank answer squares.

Place scratchy Velcro on the backs of answer pieces.

